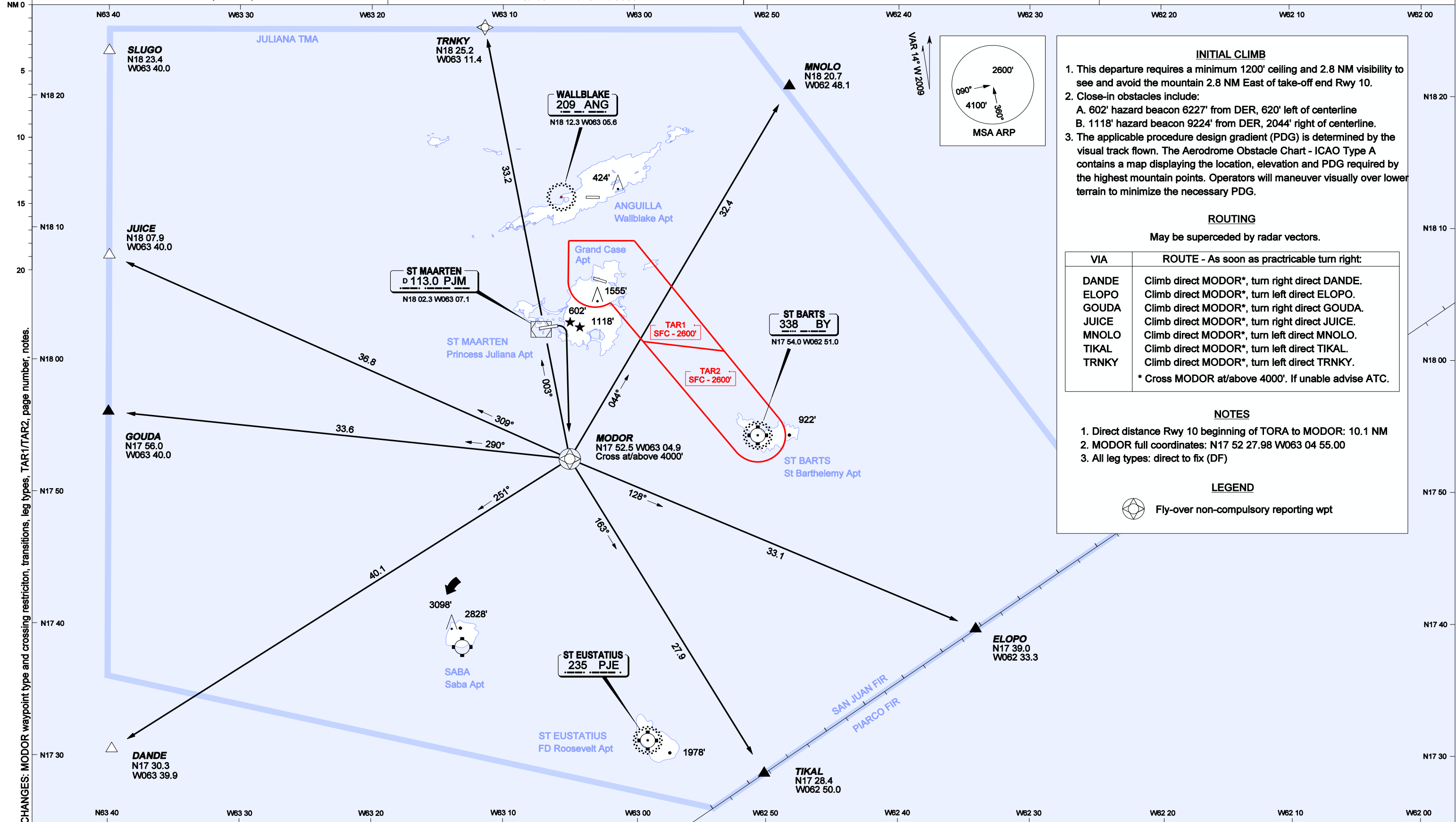


**SID - ICAO  
MODOR TWO RNAV (GNSS) DEPARTURE**

AERODROME ELEVATION: 14'  
TRANSITION LEVEL: FL65  
TRANSITION ALTITUDE: 5000'

JULIANA APPROACH: 128.95 (PRIMARY), 118.7  
JULIANA TOWER: 118.7

**PRINCESS JULIANA INT'L (TNCM)  
PHILIPSBURG, ST MAARTEN**



**INITIAL CLIMB**

- This departure requires a minimum 1200' ceiling and 2.8 NM visibility to see and avoid the mountain 2.8 NM East of take-off end Rwy 10.
- Close-in obstacles include:
  - 602' hazard beacon 6227' from DER, 620' left of centerline
  - 1118' hazard beacon 9224' from DER, 2044' right of centerline.
- The applicable procedure design gradient (PDG) is determined by the visual track flown. The Aerodrome Obstacle Chart - ICAO Type A contains a map displaying the location, elevation and PDG required by the highest mountain points. Operators will maneuver visually over lower terrain to minimize the necessary PDG.

**ROUTING**  
May be superseded by radar vectors.

VIA	ROUTE - As soon as practicable turn right:
DANDE	Climb direct MODOR*, turn right direct DANDE.
ELOPO	Climb direct MODOR*, turn left direct ELOPO.
GOUDA	Climb direct MODOR*, turn right direct GOUDA.
JUICE	Climb direct MODOR*, turn right direct JUICE.
MNOLO	Climb direct MODOR*, turn left direct MNOLO.
TIKAL	Climb direct MODOR*, turn left direct TIKAL.
TRNKY	Climb direct MODOR*, turn left direct TRNKY.

\* Cross MODOR at/above 4000'. If unable advise ATC.

**NOTES**

- Direct distance Rwy 10 beginning of TORA to MODOR: 10.1 NM
- MODOR full coordinates: N17 52 27.98 W063 04 55.00
- All leg types: direct to fix (DF)

**LEGEND**

Fly-over non-compulsory reporting wpt

CHANGES: MODOR waypoint type and crossing restriction, transitions, leg types, TAR1/TAR2, page number, notes.